



# KASK

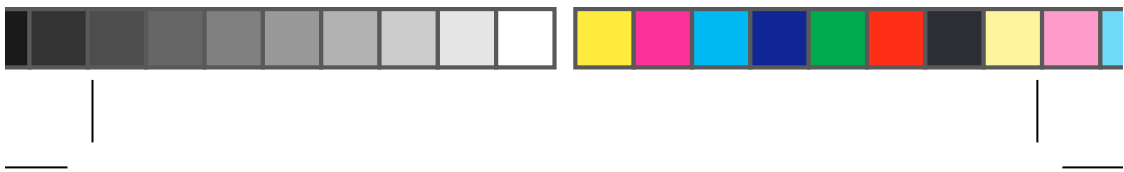
AS/NZS 1801



## USE AND CARE BOOKLET **OCCUPATIONAL PROTECTIVE HELMET**

PRODUCT OF ITALY







EN

**DANGER!** intended use of this helmet involves activities that are extremely dangerous. FAILURE TO HEED AND FOLLOW THESE INSTRUCTIONS AND ANY OF THESE WARNINGS MAY RESULT IN SERIOUS INJURY OR EVEN DEATH.

**WARNING:** Carefully read and understand these instructions. Use this helmet exclusively for the activities for which it is certified (see Labeling) and in strict accordance with AS/NZS 1801

**WARNING:** improper use of this helmet can cause serious or fatal injury. If the instructions are not followed correctly, the level of protection offered by the helmet can be significantly reduced. Inspect the helmet before each use for any signs of visible damage. DO NOT USE HELMET IF THERE IS ANY SUSPICION OF ITS CONDITION OR AFTER A MAJOR IMPACT.

**WARNING:** It is mandatory that the user becomes knowledgeable about all features of the helmet, its capabilities and limitations, and gets specific instructions and/or training from a competent and responsible person in the proper use of the helmet.

**WARNING:** USERS OF THE HELMET ARE FULLY RESPONSIBLE FOR THEIR ACTIONS AND ASSUME ALL RISKS FOR THEIR DECISIONS. KASK S.p.A., its affiliates, subsidiaries, importers, distributors and dealers will accept no responsibility in the event of an accident leading to injury or even death and shall not be liable for any injury, death, loss, or damage resulting from improper use of this helmet.

**NOTE:** Activities involving the use of this equipment are inherently dangerous. You are responsible for your own actions and decisions. Before using this equipment, you must:

- read and understand all instructions for use;
- get specific training in its proper use;
- become acquainted with its capabilities and limitations;
- Understand and accept the risks involved.

Failure to heed any of these warnings may result in severe injury or death. The manufacturer and/or distributor will accept no responsibility in the event of accidents leading to injury or even death due to improper use of the helmet. This helmet is constructed to absorb impact by partially distributing the shock or by damaging its essential components. Activities at height present a risk of serious head injury. Wearing a helmet can significantly reduce this risk, but cannot entirely eliminate it. This helmet should be used exclusively for the activities for which it is certified (see labeling). This helmet has been approved for industrial head protection.



## EN

**WARNING:** This helmet cannot always protect the user from injury. Specifically, one should keep in mind that no helmet can protect the head from the shock generated by violent impact. Following violent impact, even if no damage is visible, the helmet should be replaced, in that its capacity to absorb further impact could be impaired.

**WARNING:** Certain chemical products, especially solvents, can damage your helmet. Protect your helmet from exposure to chemicals.

**WARNING:** Paint and stickers may contain materials that, with time, can alter the physical properties of the helmet. Before applying any of these products, verify their compatibility with Polycarbonate/ABS.

**WARNING:** Your helmet can be damaged from improper care: do not sit on it, pack it too tightly, drop it, allow it to contact sharp or pointed objects, etc. Do not expose your helmet to high temperatures, for example by leaving it inside a vehicle in direct sunlight.

**INSTRUCTIONS:** As a protective measure, this helmet must be worn at all times during work activity. For adequate protection, it is important that the helmet be sized correctly and fit the head properly to offer optimum comfort and safety. The helmet should be adjusted to fit the user; for example, the straps should be positioned so that they do not cover the ears, the buckle should be kept away from the jawbone, and the straps and buckle should both be adjusted so that they are comfortable and secure. After properly buckling and adjusting the strap, always check that the helmet is not excessively tight; nor should it move freely back and forth. Verify that the helmet is well seated and centered on the head (see Fig. 1). The better a helmet is adjusted (minimal movement front to back or side-to-side), the better protection it can provide.

**ZENITH NOMENCLATURE:** 1. Shell; 2. Headband (not removable); 3. Size adjustment system; 4. Chinstrap; 5. Lateral retractor; 6. Buckle; 7. Lamp clip; 8. Side slot to insert hearing protection; 9. Side slot to insert visor adapter; 10. Marking Label

**HP PLUS NOMENCLATURE:** 1. Shell; 2. Headband (not removable); 3. Size adjustment system; 4. Chinstrap; 5. Lateral retractor; 6. Buckle; 7. Lamp clip; 8. Side slot for hearing protection adapter; 9. Side slot to insert visor adapter; 10. Marking Label

**INSTRUCTIONS FOR USE:** As a preventive measure it is essential to wear a helmet at all times during work activity. For adequate protection, the helmet must be the right size and fit the head perfectly so as to offer maximum comfort and safety. The helmet must be adjusted to fit the wearer, for instance, the



EN

straps should be positioned so as not to cover the ears, the buckle must be located away from the jawbone and the straps and buckle together must be adjusted in such a way as to be both comfortable and close fitting. With the chin strap fastened and correctly adjusted, always check that the helmet does not squeeze the head nor moves freely back and forth (see Fig. 1).

**HELMET ADJUSTMENTS:** Wear the helmet and adapt the size by turning the rear wheel (clockwise to tighten the size and counter-clockwise to enlarge it) or simply (only for models equipped) by drawing the two quick-closing elements to obtain the desired tension (Fig. 2). Position the size adjustment system in the nuchal area as shown (Fig. 3), tilting it and adjusting it in height. For versions equipped with a chin strap, fasten it by inserting one buckle strap into the other until it clicks into place (Fig. 4a). Pull the chin strap to check that the buckle is locked (Fig. 5). Adjust the length of the chin-strap to firmly secure the helmet on your head. The rubber ring must be positioned on end of the tape to prevent it dangling. Adjust the lateral retractor of the chin strap by sliding it along the straps until you find the desired position below the ear (Fig. 6). To remove the helmet from the head, open the chin-strap by simultaneously pressing the buttons on each side of the buckle (Fig. 4b).

**SPARE PARTS:** Changes, replacements and/or removals of one or any of the original components of the helmet are prohibited unless authorized by the manufacturer. Only use original KASK spare parts. The helmet should not be modified to accommodate other accessories other than those described below. If necessary contact your retailer or the manufacturer directly.

**HELMET ACCESSORIES:** Lamp clip - visor attachment adapters - reflective stickers - neck protector - sombrero - earmuffs - eye protection visor - face shield - plastic mesh protector - metal mesh protector - replacement padding - winter padding.

Check with your retailer or manufacturer the actual availability of the accessories listed above. Follow the installation and operating instructions supplied with the accessory. Only use accessories approved by the manufacturer.

**CHECK:** Before using the helmet check its integrity in all its parts. Following a violent impact even if the damage is not visible replace the helmet, as it may have exhausted its ability to absorb further shocks and provide the expected protection.

**CLEANING:** Clean the helmet (and any accessories) using only water, mild soap and a soft, clean cloth, and let it air dry at room temperature. The internal padding can be removed and washed by hand in cold water or in the washing



## EN

machine (max. 30°C -85° F). Never use chemical cleaning products or solvents.

**STORAGE:** When not in use, the helmet should be stored away from direct sunlight and sources of heat, and we recommend putting it back in the original package.

**MODIFICATIONS AND REPAIRS:** Do not apply adhesives, solvents, stickers, or paint that does not comply with the manufacturer's specifications. Do not modify the helmet in any way unless the modifications are specifically authorized by KASK. An unauthorized modification can reduce the product's effectiveness and invalidate its certification. Repairs made outside of KASK facilities are prohibited.

**TRANSPORT:** Given the type of device (helmet), no particular instructions are necessary for its transport. During transport do not pack the helmet too tightly.

**LIFE:** The actual lifetime of a product ends when it meets one of the retirement criteria listed below (see "When to retire your equipment"), or when it is judged obsolete (see "Product Obsolescence"). The actual lifetime is influenced by a variety of factors such as: the intensity, frequency, and environment of use, the competence of the user, how well the product is stored and maintained, etc.

**ATTENTION:** in extreme cases, the lifetime of the product can be reduced to one single use through exposure to for example any of the following: chemicals, extreme temperatures, sharp edges, major fall or load, etc. Inspect the helmet regularly to check for any damage! Cracks, detached parts, warping, flaking, and changes in color are significant elements for verifying the helmet's state of deterioration; in any case, we advise replacing it after approximately 5 years, because over time its capacity for protection decreases due to the aging of the materials. The manufacturing date is shown on the inside of the helmet.

**INSPECTION:** Inspect equipment periodically for damage and/or deterioration. If you find any minor cuts, abrasions, or other visible damage, make sure the helmet is inspected before further use. In addition to the inspection before and during use, a periodic in-depth inspection must be carried out by a competent inspector at least once every 12 months. The frequency of the in-depth inspection must be governed by the type and the intensity of use. To keep better track of your equipment, it is preferable to assign each piece of equipment to a unique user so that he/she will know its history. The results of inspections should be documented in an "inspection record". This document must allow recording of the following details: type of equipment, model, name and contact information of the manufacturer or distributor,



EN

means of identification (serial or individual number), year of manufacture, date of purchase, date of first use, name of user, all other pertinent information for example maintenance and frequency of use, the history of periodic inspections (date, comments and noted problems, name and signature of the competent person who performed the inspection).

**WHEN TO RETIRE YOUR EQUIPMENT:** immediately retire any equipment if:

- it fails to pass inspection (inspection before and during use and the periodic in-depth inspection);
- it has been subjected to a major fall or load;
- you do not know its full usage history;
- it is at least 10 years old;
- you have any doubt as to its integrity.

Destroy retired equipment to prevent further use.

**PRODUCT OBSOLESCENCE:** There are many reasons why a product may be judged obsolete and thus retired before the end of its actual lifetime. Examples include changes in applicable standards, regulations, or legislation; development of new techniques, incompatibility with other equipment, etc.

**GUARANTEE:** This product is guaranteed for 3 years against any defects in materials or manufacturing. Exclusions from the guarantee: normal wear and tear, oxidation, modifications or alterations, incorrect storage, poor maintenance, damage due to accidents and/or negligence, or to improper and incorrect usage. KASK is not responsible for the consequences, direct, indirect or accidental, or any other type of damage befalling or resulting from the use of its products.

**WARNING - SPECIFIC TRAINING IS ESSENTIAL BEFORE USE:** Read this notice carefully and keep all instructions and information on the proper use and application of the product(s). Many types of misuse exist and it is impossible to enumerate or even imagine all of them. Contact KASK if you have any doubt or difficulty understanding these instructions. Activities at height are dangerous and may lead to severe injury or even death. Gaining adequate training in appropriate techniques and methods of protection is your own responsibility. You personally assume all risks and responsibilities for all damage, injury or death which may occur during or following incorrect use of our products in any manner whatsoever. If you are not able, or not in a position to assume this responsibility or to take this risk, do not use this equipment.

**USE:** This product must only be used by competent and responsible persons; or those placed under the direct and visual supervision of a competent and



## EN

responsible person. Personal protective equipment (PPE) is to be used only on or with energy absorbing systems (for example dynamic ropes, energy absorbers etc.). Check that this product is compatible with the other components of your equipment, see the instructions specific to the products. To prolong the life of this product, take care when transporting and using it. Avoid impacts, or contact with abrasive surfaces or sharp edges.

**LABELING:** information contained on the inside of the helmet, printed on a label, should not be removed for any reason.

**ADDITIONAL REQUIREMENTS (only for the Zenith):** This helmet complies with additional requirements according to the standard EN 12492:2012 – Shock absorption § 4.2.1.2 (Front), § 4.2.1.3 (Side), § 4.2.1.4 (Rear) and EN50365:2002 § 5.3 electrical requirements”





EN

Illustrations and/or description of inside labels:

#### DIAGRAM LABELING

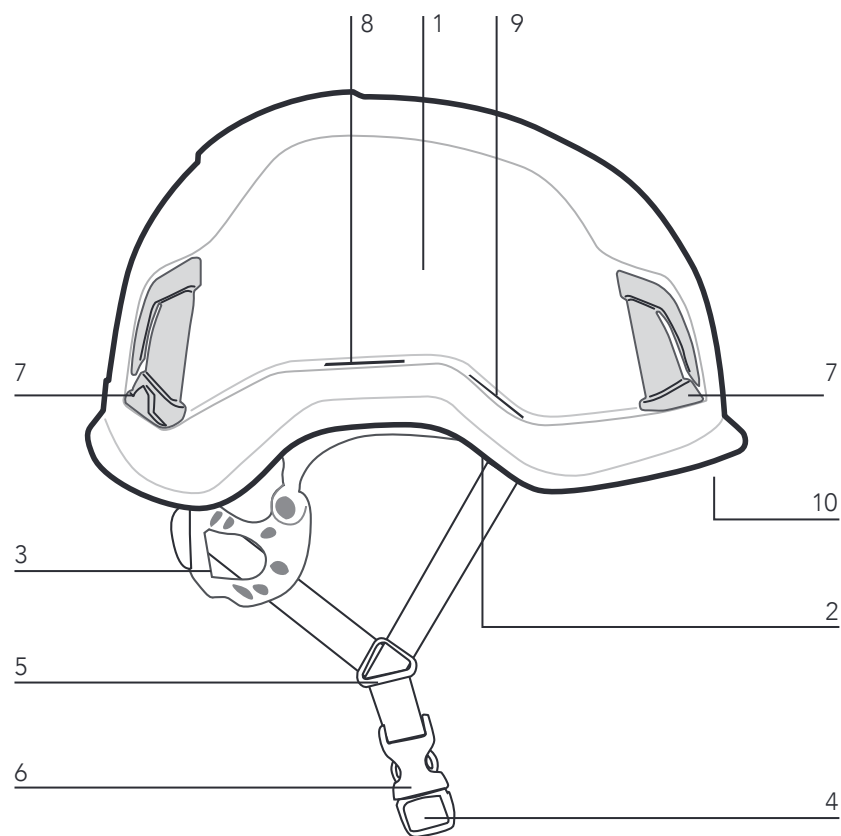
1	MANUFACTURER	6	APPLICABLE REGULATIONS
2	NAME OF THE MODEL	7	TYPE 1 - General Industrial Safety Helmet
3	WEIGHT OF THE HELMET		
4	SIZE IN CM	8	IDENTIFICATION NUMBER
5	MANUFACTURING DATE		

#### LABELING REPRODUCTION

1	KASK SPA	6	Complies with <b>AS/NZS 1801:1997</b>
2	ZENITH		
3	500 g	7	TYPE 1 - General Industrial Safety Helmet
4	Adjustable 53-63 cm		
5	05/2016	8	16.2000.0001



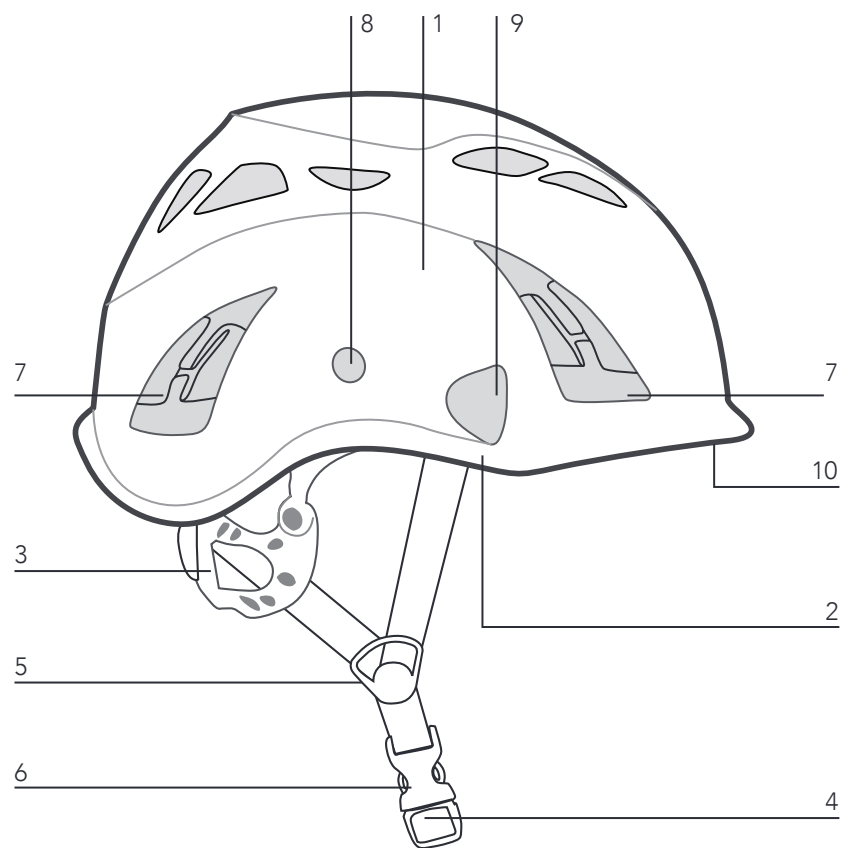
## ZENITH NOMENCLATURE



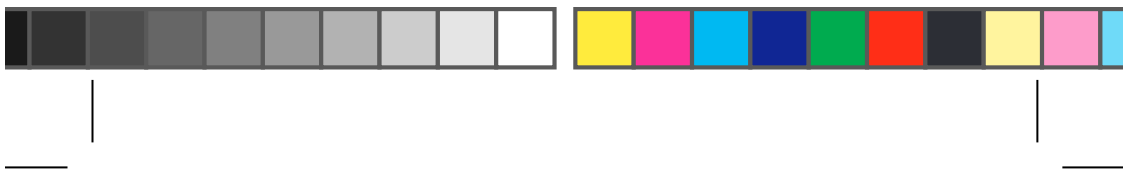
<b>Size:</b>	ADJUSTABLE <b>53 - 63 cm</b>
--------------	---------------------------------



## HP PLUS NOMENCLATURE

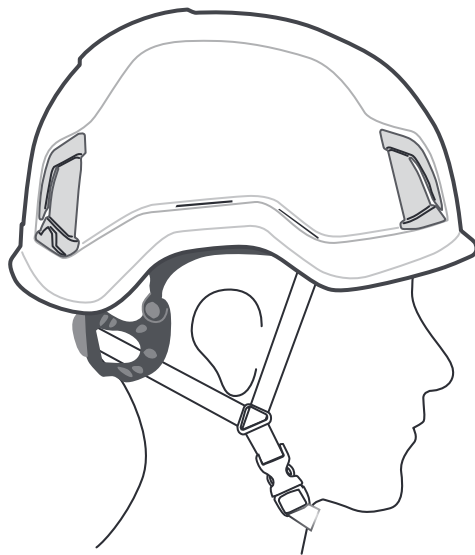


<b>Size:</b>	ADJUSTABLE <b>51 - 62 cm</b>
--------------	---------------------------------



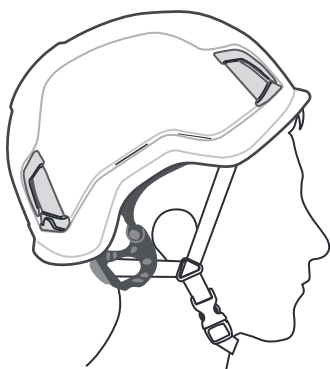
1

OK



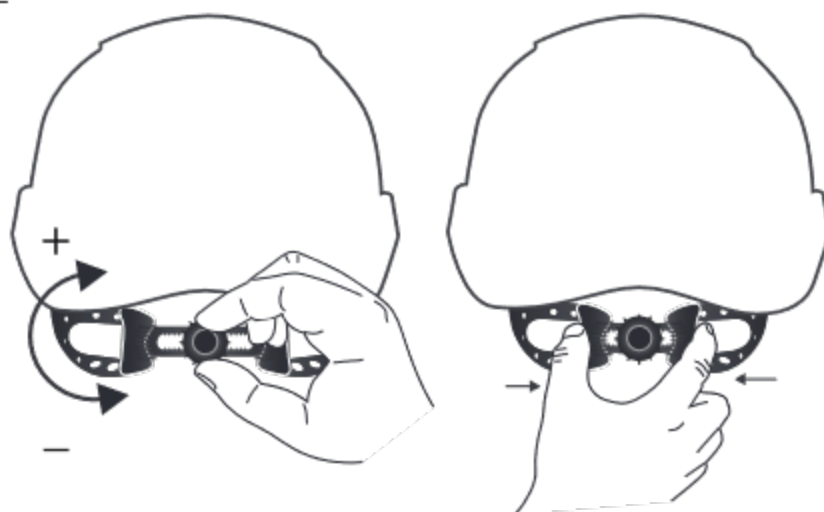
NO

NO

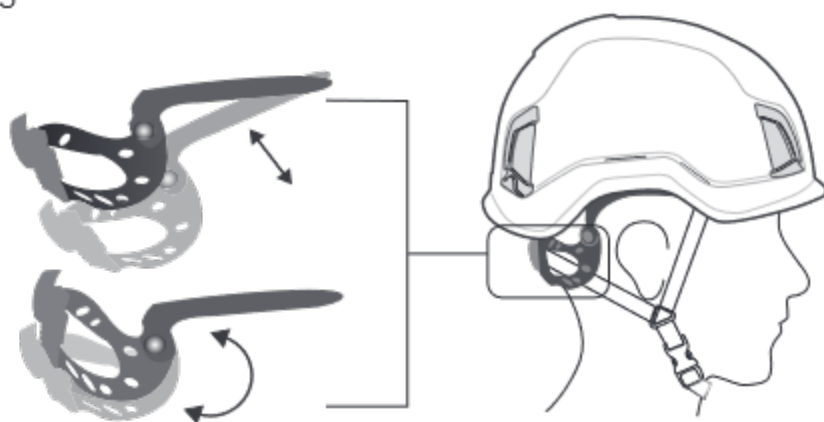


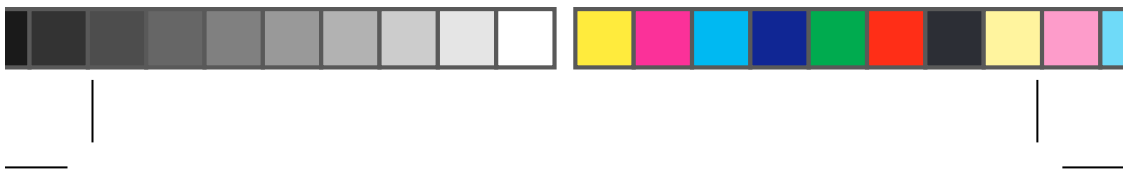


2

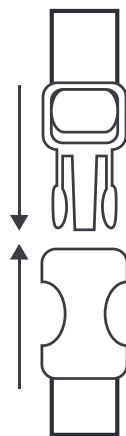


3

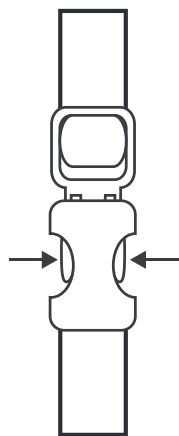




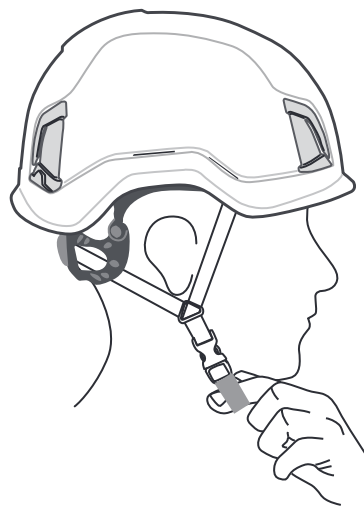
4a



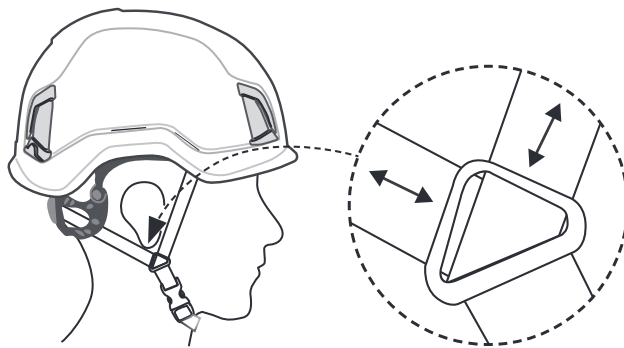
4b

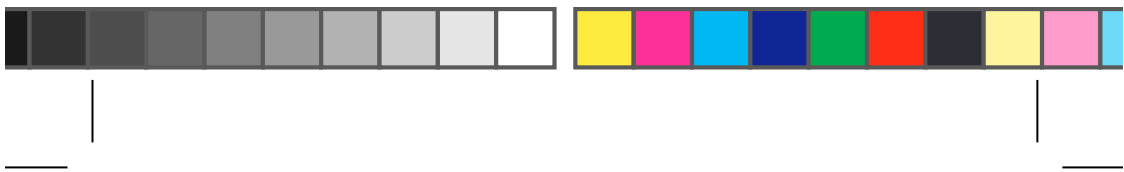


5



6







AS/NZS 1801



KASK spa  
24060 Chiuduno, BG  
Via Firenze, 5 - Italy  
t. +39 035 4427497  
info@kask.com  
www.kask.com



420149 - 12/2020